

SPECIFICATIONS ON DS-540

- Power requirements: 37 - 70 kW
- PTO speed: 530 r.p.m
- Overall length: 2650
- Overall weight: 2800
- Overall length: 3200
- Number of cutting flails: 36
- Flail rotor speed: 1655 r.p.m
- Flywheel diameter: 810
- Flywheel speed: 1258 r.p.m
- No of drive belts: 3
- Auger speed: 344 r.p.m
- No of cutting blades: 6
- Tyre size: 600 X 13 cross ply
- Machine weight: 985 kg
- Flap control: Hydraulic / push pull cable
- Chute swivel: Hydraulic
- Adjustable draw bar: Yes
- Adjustable skids: Yes



STAALMEESTER DESIGN, DEVELOPMENT AND TRAINING CENTRE

STAALMEESTER

2 Coetzee Street, Hartbeesfontein, South Africa
P O Box 71, Hartbeesfontein 2600
Tel: 0027 - 18 - 431 0300 / 431 - 0693
Fax: 0027 - 18 - 431 0185
E-mail: staalmes@mweb.co.za
Website: www.staalmeester.co.za

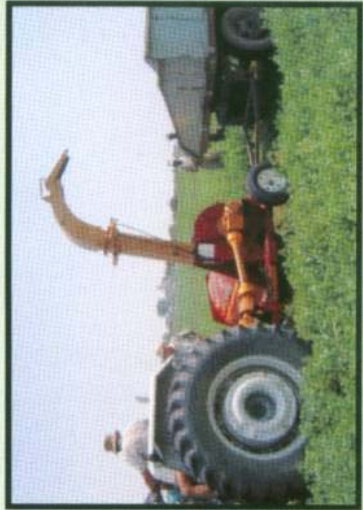
*We reserve the right to change
the design and specifications
without notice.*

3A.

STAALMEESTER

PRODUCTIVITY, COST EFFICIENCY AND SERVICE TO THE FARMER.

STAALMEESTER DS-540 DOUBLE CHOP



It is really two machines in one. The standard model will both harvest direct or pick up from the swath.



Robust flail rotor fitted with 36 flails.

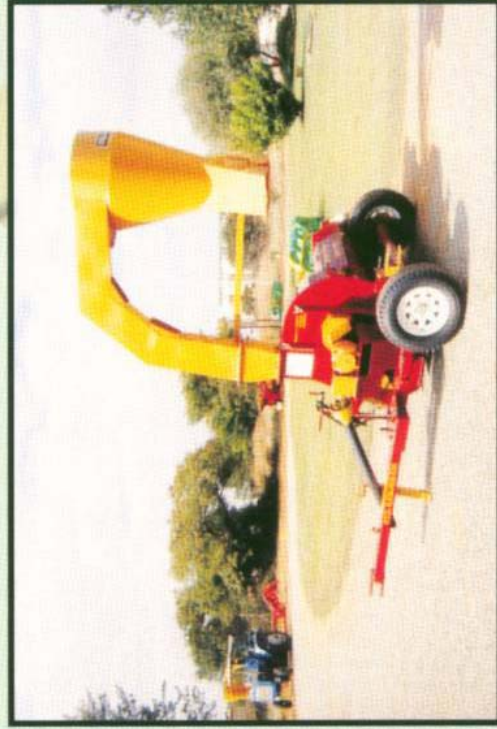
From the flail rotor the material is fed by a heavy duty auger into an efficient secondary chopper / blower, which develops a high velocity air stream right into the back of the trailer.



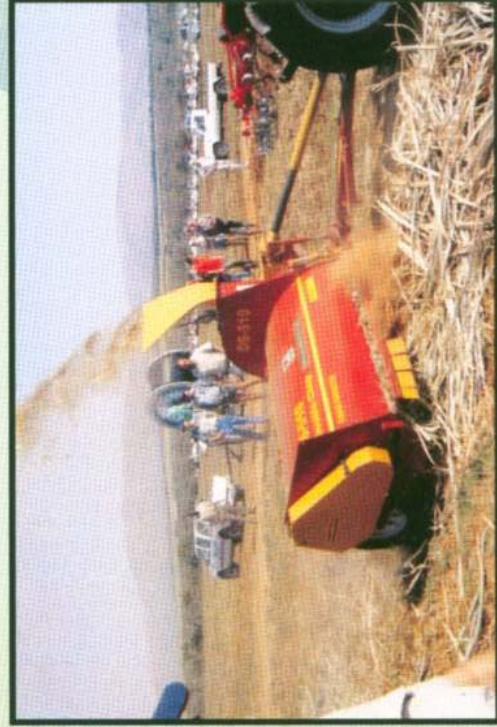
Fitted with hydraulic cylinders for chute traverse and flap control.



The DS-540 can be equipped with a cyclone and platform and platform to chop directly into bags.



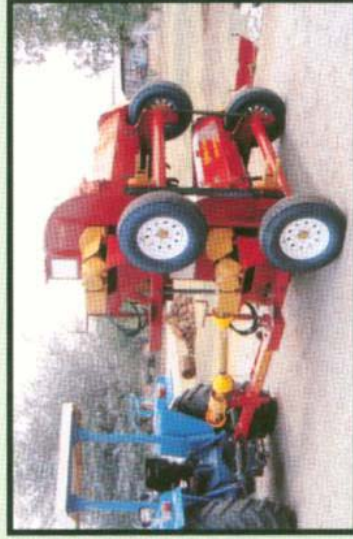
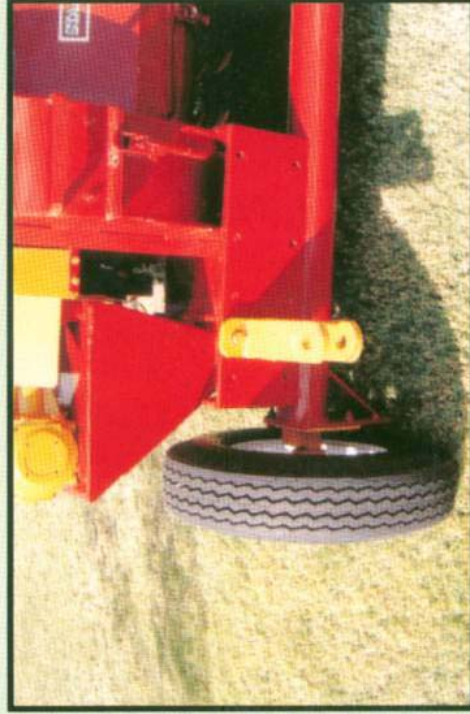
Useful and efficient when cutting sugar cane and cotton stems and spreading it widely and evenly over the field.



Strong transport arm to protect the hydraulic cylinder when in transport mode.



The trailer hitch with 5 adjustable settings to suit every need and effective in sandy and uphill conditions.



Special anti-wrap auger delivers the harvested material to the copper / blower. The flywheel is fitted with hardened knives and can be adjusted and replaced quickly and easily.

